

# SB6

## SHEAR BEAM LOAD CELL



Capacity from 500 kg to 10000 kg

- 17-4 PH STAINLESS STEEL
- COMBINED ERROR  $\leq \pm 0.02\%$  (0.0170% C4)
- PROTECTION CLASS IP68



CAPACITY	kg	ACCURACY CLASS		NET WEIGHT (kg)	CODE
		C3	C4		
500		•	•	2.1	SB6-500
1000		•	•	2.1	SB6-1000
2000		•	•	2.1	SB6-2000
5000		•	-	4.2	SB6-5000
7500		•	-	4.2	SB6-7500
10000		•	-	4.2	SB6-10000

### CERTIFICATIONS



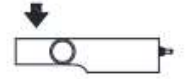
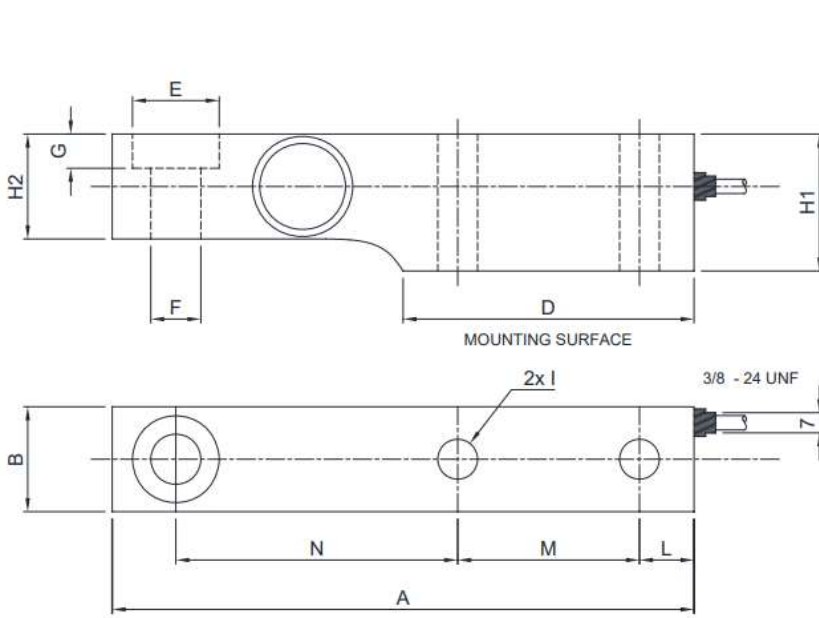
CERTIFICATIONS ON REQUEST



# SB6

## SHEAR BEAM LOAD CELL

### DIMENSIONS (mm)



	500 kg 1000 kg 2000 kg	5000 kg 7500 kg	10000 kg
A	203.2	235	235
B	36.48	47.5	55
D	101.6	111.2	111.2
E	Ø30.3	Ø41.3	Ø41.3
F	Ø17.5	Ø25.5	Ø25.5
G	11.9	15.75	15.75
H1	47.63	69.9	69.9
H2	36.5	47.6	58.6
I	Ø14	Ø22	Ø25
L	19.05	20.6	20.6
M	63.5	66.7	66.7
N	98.45	123.8	123.8

### TECHNICAL FEATURES

Material	17-4 PH stainless steel	
OIML R60 Accuracy class • Verification intervals	C3 • 3000	C4 • 4000
Nominal load ( E max)	500 - 1000 - 2000 5000 - 7500 - 10000 kg	500 - 1000 - 2000 kg
Minimum verification interval (V min)	E max / 10000	E max / 15000
Combined error	≤±0.02%	≤±0.017%
Protection class	IP68	

Rated output	2 mV/V ±0.2%	Input resistance	350 Ω ±3.5
Temperature effect on zero	0.0018% °C	Output resistance	350 Ω ±3.5
Temperature effect on span	0.0014% °C	Zero balance	<±1%
Compensated temperature range	-10 °C / +40 °C	Insulation resistance	≥5000 MΩ
Operating temperature range	-35 °C / +65 °C	Safe overload (% of full scale)	150%
Creep at nominal load in 30 minutes	0.02%	Ultimate overload (% of full scale)	300%
Max supply voltage without damage	18 V	Deflection at nominal load	0.4 mm

### ELECTRICAL CONNECTIONS

Cable length	5 m (500-7500 kg); 10 m (10000 kg)
Cable diameter	5 mm
Cores	6 x 0.20 mm <sup>2</sup>

