

SB5

SHEAR BEAR LOAD CELL



Capacity from 500 kg to 5000 kg

- 17-4 PH STAINLESS STEEL
- COMBINED ERROR $\leq \pm 0.02\%$
- PROTECTION CLASS IP67



CAPACITY	kg	ACCURACY CLASS C3	NET WEIGHT (kg)	CODE
500	500	•	0.9	SB5-500
1000	1000	•	0.9	SB5-1000
2000	2000	•	0.9	SB5-2000
5000	5000	•	1.5	SB5-5000

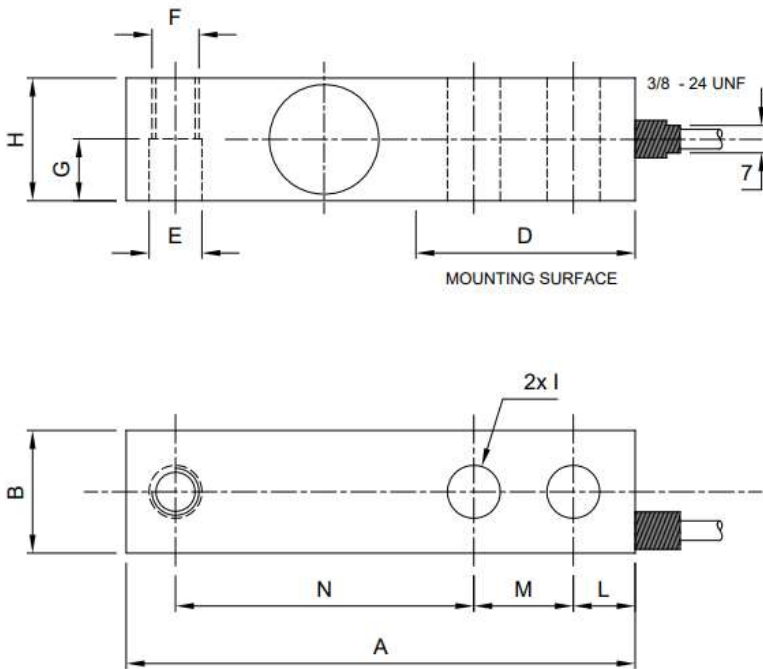
CERTIFICATIONS

OIML R60 C3

SB5

SHEAR BEAR LOAD CELL

DIMENSIONS (mm)



	500 - 1000 2000 kg	5000 kg
A	130	171.5
B	31.3	36.8
D	56	76
E	Ø13.5	Ø20.7
F	M12x1.75	M20x2.5
G	15.8	19
H	31.3	36.8
I	Ø13.5	Ø20.7
L	15.8	19
M	25.4	38.1
N	76.2	95.3

TECHNICAL FEATURES

Material	17-4 PH stainless steel	
OIML R60 Accuracy class • Verification intervals	C3 • 3000	
Nominal load (E max)	500 - 1000 - 2000 kg	5000 kg
Minimum verification interval (V min)	E max / 7500	E max / 9000
Combined error	≤±0.02%	
Protection class	IP67	
Rated output	3 mV/V ±0.27%	Input resistance 350 Ω ±3.5
Temperature effect on zero	0.0018% °C	Output resistance 350 Ω ±3.5
Temperature effect on span	0.0014% °C	Zero balance ≤±1%
Compensated temperature range	-10 °C / +40 °C	Insulation resistance >5000 MΩ
Operating temperature range	-35 °C / +65 °C	Safe overload (% of full scale) 150%
Creep at nominal load in 30 minutes	0.02%	Ultimate overload (% of full scale) 300%
Max supply voltage without damage	18 V	Deflection at nominal load 0.4 mm

ELECTRICAL CONNECTIONS

Cable length	5 m
Cable diameter	5 mm
Cores	4/6 x 0.20 mm ²

