

DSB2

DOUBLE SHEAR BEAM LOAD CELL



IP68

- NICKEL PLATED ALLOY STEEL
- COMBINED ERROR $\leq \pm 0.02\%$
- PROTECTION CLASS IP68

Capacity from 20 klb to 60 klb



CAPACITY	kg	ACCURACY CLASS C3	NET WEIGHT (kg)	CODE
20klb / 9 ton		•	2.7	DSB2-20
30klb / 13.6 ton		•	7.75	DSB2-30
40klb / 18 ton		•	7.78	DSBB2-40
50klb / 23 ton		•	8.3	DSB2-50
60klb / 27 ton		•	8.5	DSB2-60

CERTIFICATIONS

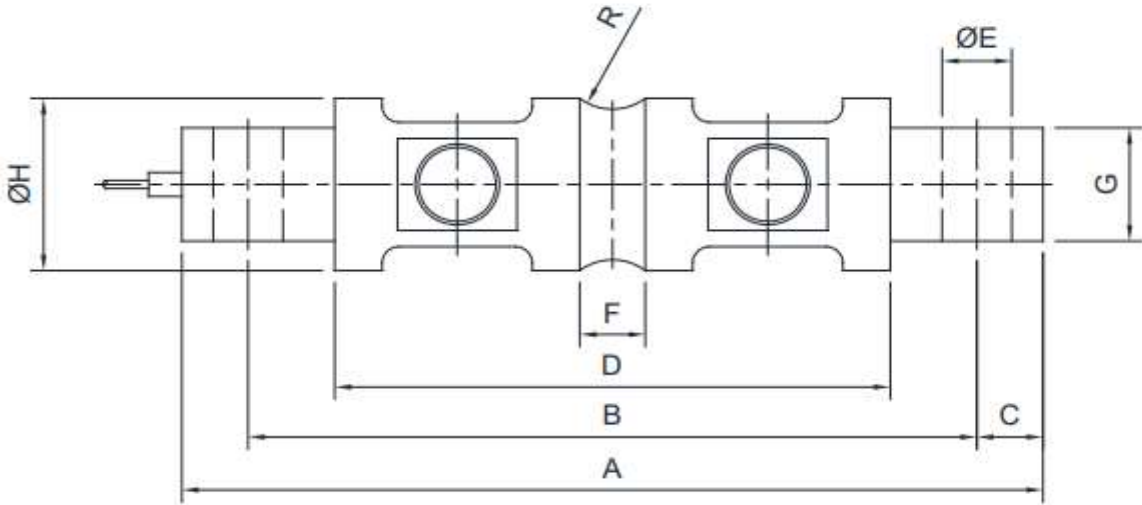


OIML R60 C3

DSB2

DOUBLE SHEAR BEAM LOAD CELL

DIMENSIONS (mm)



	A	B	C	D	ØE	F	G	ØH	R
20 klb	206	174.6	15.7	133	16.7	21.6	28.4	49.5	12.7
30-60 klb	260	215	22.4	165	27	25.7	60.2	76.2	25.4

TECHNICAL FEATURES

Material	Nickel plated alloy steel
OIML R60 Accuracy class • Verification intervals	C3 • 3000
Nominal load (E max)	20, 30, 40, 50, 60 klb
Minimum verification interval (V min)	E max / 10000 - E max / 15000
Combined error	≤±0.023%
Protection class	IP68

Rated output	3.0 mV/V ± 0.1%	Input resistance	700 Ω ± 7
Temperature effect on zero	0.002% °C	Output resistance	700 Ω ± 7
Temperature effect on span	0.002% °C	Zero balance	≤ ± 1 %
Compensated temperature range	-10 °C / +40 °C	Insulation resistance	≥ 5000 MΩ
Operating temperature range	-35 °C / +65 °C	Safe overload (% of full scale)	150%
Creep at nominal load in 30 minutes	0.016%	Ultimate overload (% of full scale)	300%
Max supply voltage without damage	18 V	Deflection at nominal load	0.6 mm

ELECTRICAL CONNECTIONS

Cable length	9 m
Cable diameter	5 mm (20klb) / 8 mm (30klb-60klb)
Cores	4 x 0.22 mm ²



SHIELD	
+ SIGNAL	GREEN
+ EXCITATION	RED
- SIGNAL	WHITE
- EXCITATION	BLACK